

Henk Badings

1907 - 1987

Arcadia

Kleine leichte Spielstücke

Band 1: 10 Fünfton-Stücke auf 10 weißen Tasten

für Klavier
for Piano

ED 4176

ISMN 979-0-001-04902-3

Band 2: 10 Fünfton-Stücke auf 10 weißen Tasten für Klavier

ED 4177

Band 3: 10 kleine Stücke ohne Daumen-Untersatz für Klavier

ED 4178

Band 4: 10 kleine Stücke, Diskant im Fünftonumfang für Klavier

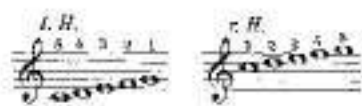
ED 4179

Band 5: 10 kleine Stücke, Diskant auf 10 Tasten für Klavier

ED 4180

PREVIEW
Low Resolution

Canon



Allegro

1

2

Canto corale

Two staves of piano introduction in bass clef. The right hand plays a sequence of eighth notes: G2, A2, B2, C3, D3, E3, F3, G3. The left hand plays a sequence of eighth notes: F2, E2, D2, C2, B1, A1, G1, F1.

l. II.
5 4 3 2 1
5 4 3 2 1

r. II.
1 2 3 4 5
1 2 3 4 5

Two small musical staves showing fingerings. The left hand (l. II.) has fingers 5, 4, 3, 2, 1. The right hand (r. II.) has fingers 1, 2, 3, 4, 5.

Basso ostinato

3

Andante

p

Musical system 3, marked '3'. It features a treble clef with a 4/4 time signature and a bass clef. The tempo is 'Andante' and the dynamic is '*p*'. The right hand plays a melody starting on G4, moving up to B4, then down to A4, G4, F4, E4, D4. The left hand plays a bass line starting on G2, moving up to B2, then down to A2, G2, F2, E2, D2.

Musical system 4, continuing the piece. The right hand melody continues from the previous system. The left hand bass line continues with a similar pattern.

Canteresso

4

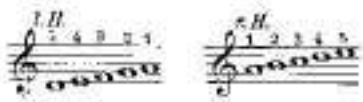
p

Musical system 5, marked '4'. It features a treble clef with a 4/4 time signature and a bass clef. The dynamic is '*p*'. The right hand plays a melody starting on G4, moving up to B4, then down to A4, G4, F4, E4, D4. The left hand plays a bass line starting on G2, moving up to B2, then down to A2, G2, F2, E2, D2.

Musical system 6, continuing the piece. The right hand melody continues with a slur over the first two measures. The left hand bass line continues with a similar pattern.

PREVIEW Low Resolution

Canon



Andante

5

Musical notation for the first system of the Canon, marked Andante, p espr. The system consists of two staves with a treble clef and a 4/4 time signature. The music features a melodic line in the right hand and a supporting bass line in the left hand, with a fermata over the final measure.

Musical notation for the second system of the Canon, continuing the melodic and harmonic development from the first system.



Vivace

6

Musical notation for the first system of the Vivace section, marked Vivace, poco f. The system consists of two staves with a treble clef and a 4/4 time signature. The music features a more rhythmic and energetic melodic line in the right hand.

Musical notation for the second system of the Vivace section, continuing the rhythmic and energetic development.

Intermezzo



Andante

7

Musical notation for the first system of the Intermezzo, marked Andante, p espr. The system consists of two staves with a treble clef and a 4/4 time signature. The music features a melodic line in the right hand and a supporting bass line in the left hand, with a fermata over the final measure.