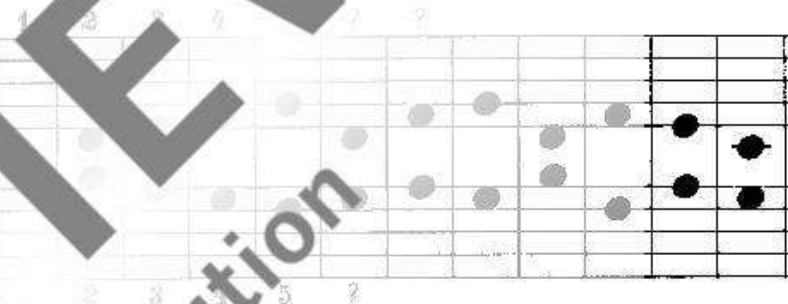
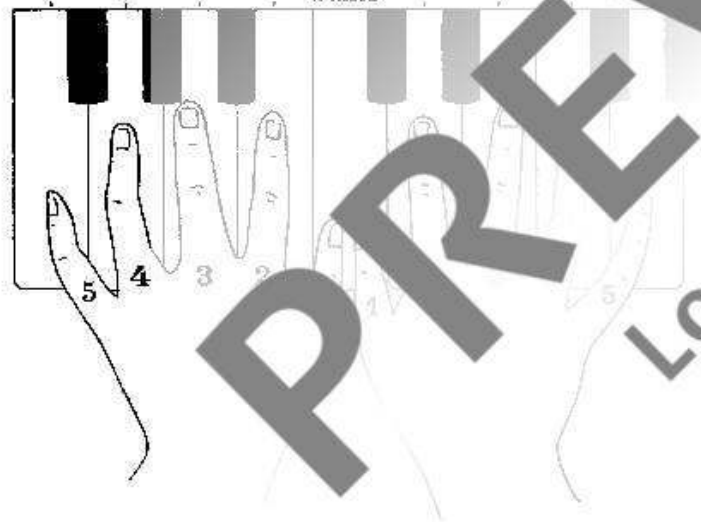
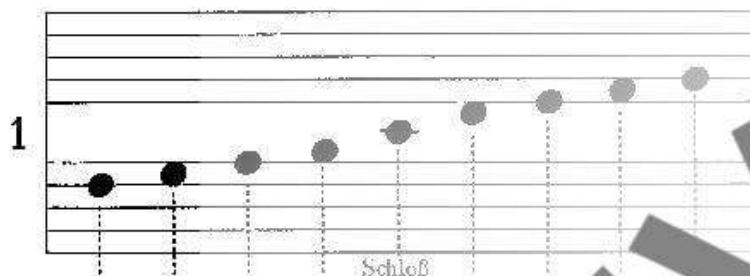
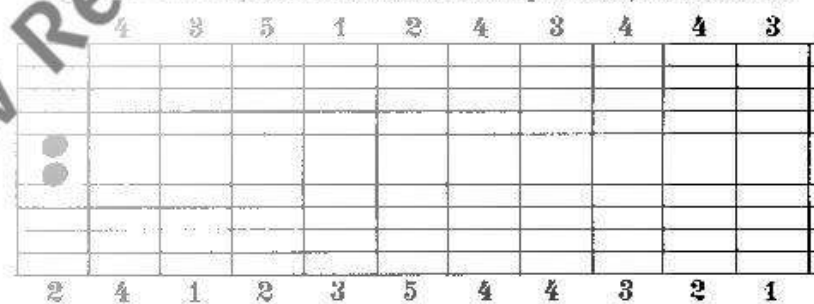


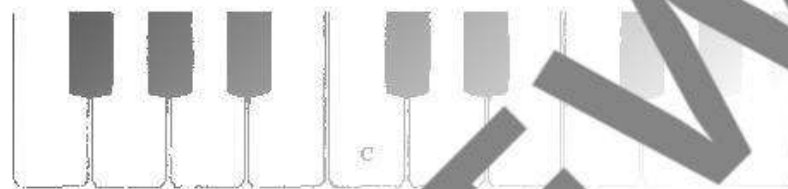
1. Abschnitt

Versieh die ersten 10 Stunden mit den Zahlen, die den betreffenden Stunden entsprechen.



Trage die Noten, die den Zahlen entsprechen, selbst ein.





Notenkopf

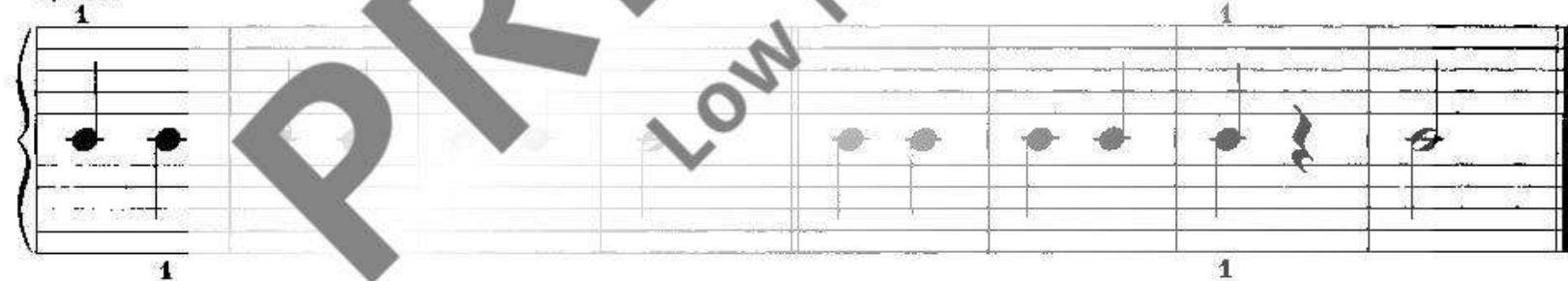
Hals rechts = rechte Hand

Notenstamm

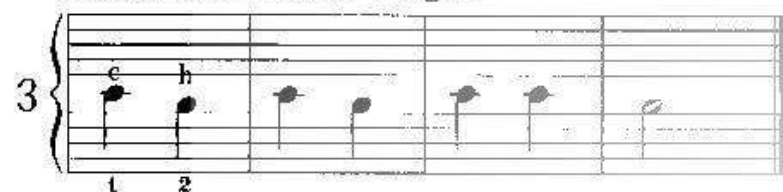
2



Spiele:



Erster und zweiter Finger



♩ = Viertelpause



Dritter Finger dazu



— = Halbe Pause



8

The image displays three staves of musical notation, likely for a piano piece. The notation is in a common time signature (C) and features a mix of eighth and sixteenth notes, along with rests. The first staff begins with a treble clef and a key signature of one flat (B-flat). The second and third staves are grouped by a brace on the left, indicating they are part of a single system. A large, diagonal watermark reading "PREVIEW Low Resolution" is overlaid across the entire page, including the musical staves.