

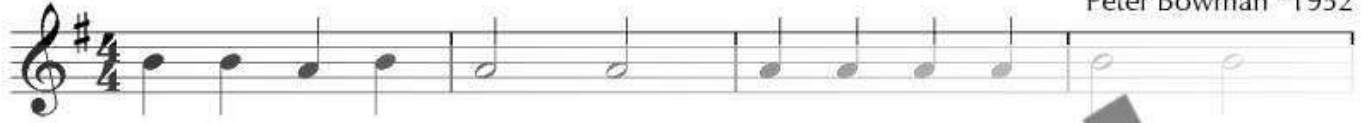


Zwei kleine Stücke mit Klavier



John Kember *1935 /
Peter Bowman *1952

①



5



②



11



© 2017 Schott Music GmbH & Co. KG, Mainz

aus: J. Kember / P. Bowman, *Recital Sight-Reading 1. Semester*

Ein ganzer Takt Pause wird im Notensystem durch ein Taktzeichen dargestellt, es zeigt die Taktart an.



Dauern Pause für einen Takt, so verhalten sich die Zeichen:



PREVIEW
Low Resolution

Duett

Barbara Hintermeier
*1957

Soprano (S) and Alto (A) vocal staves. Chords: G, D, G, D, G, D.

Measures 5-8. Chords: G, D, G.

Measures 9-12. Chord: D.

Measures 13-16. Chord: G.

© 2017 Schott Music GmbH & Co. KG, Mainz

mit der ud



Traditional aus Dänemark

Chords: Am, D7, Gmaj7.

Chords: Am, Am7, D7, G, D7, G, Am.

Measures 15-18. Chords: D, Gmaj7, Em7, Am7, Dsus4, D7, G.

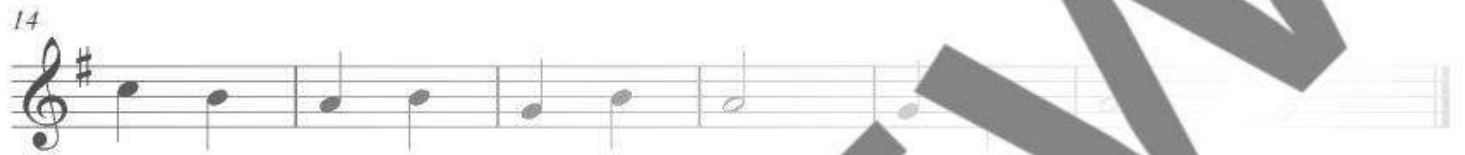
© 2017 Schott Music GmbH & Co. KG, Mainz



Alte Tanzweise



Anonymus



© 2017 Schott Music GmbH & Co. KG, Mainz

aus: Musizierbüchlein, Band 1, Schott ED 3915



Klein Walzer



Barbara Hintermeier



© 2017 Schott Music GmbH & Co. KG, Mainz

Duett

Barbara Hintermeier

S C G C F G7 C

5 C G C F

9 G7 C

13 C

© 2017 Schott Music

PREVIEW
Low Resolution

Little Bo-Peep

Traditional aus den USA
2. Stimme: Barbara Hintermeier

Musical score for 'Little Bo-Peep' in G major, 3/4 time. It features two vocal staves (Soprano and Alto) and a piano accompaniment. The lyrics are: 'Lit - tle Bo - Peep has lost her sheep and - n't know where to find them, leave 'em a - lone ev'ry one 'll come home bring 'em back to - get 'em home and bind 'em up and bring 'em home.' Chords G, D, and G are indicated above the vocal lines.

© 2017 Schott Music GmbH & Co., KG, Mainz

Le petit navire

Traditional aus Frankreich
2. Stimme: Barbara Hintermeier

Musical score for 'Le petit navire' in G major, 3/4 time. It features two vocal staves (Soprano and Alto) and a piano accompaniment. The lyrics are: 'un pe - tit na - vi - re, il é - tait un pe - tit na - vi - re. Qui n'a-vait ja - ja - ja-mais na - vi - gué, qui n'a-vait ja - ja - ja-mais na - vi - gué. O - hé! O - hé!' Chords G, D, and G are indicated above the vocal lines.

© 2017 Schott Music GmbH & Co., KG, Mainz