

Additional Treble Recorder Part to
NINE CHRISTMAS CAROLS

Arranged by
WALTER G. BERGMANN

1. O COME, ALL YE FAITHFUL

Musical notation for the first carol, 'O Come, All Ye Faithful'. It consists of three staves of music in treble clef, key signature of one sharp (F#), and 4/4 time signature. The first staff begins with a repeat sign. The second staff features a slur over two measures and an accent mark (v) above the first note of the following measure. The third staff also features an accent mark (v) above the first note of the first measure. The piece concludes with a double bar line and repeat dots.

2. THE HOLLY AND THE IVY

Musical notation for the second carol, 'The Holly and the Ivy'. It consists of a single staff of music in treble clef, key signature of one sharp (F#), and 3/4 time signature. The notation shows the beginning of the piece with a series of eighth and quarter notes.



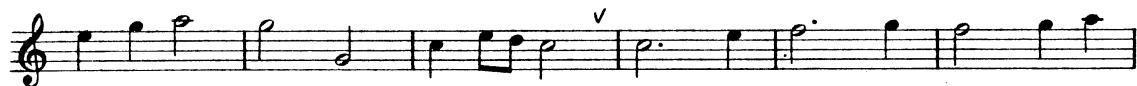
3. ONCE IN ROYAL DAVID'S CITY



4. COVENTRY CAROL



5. CHRISTIANS, AWAKE





6. THE WASSAIL SONG



7. SHEPHERDS IN THE FIELD ABIDING

