

It's Such a Super-Special Sorta Song!



Moderate & relaxed

Play eighth notes in long-short pairs.

Willard A. Palmer

Handwritten fingering: 5 1, 4 1

p *LH staccato*

mf Oh, what fun it is to play pi - an - o When you

Handwritten fingering: 1 2 5, 1 3 5

Handwritten fingering: 4 2, 5 1, 2

sing a spec-ial song that makes you smile like a Pol - ly - an - na. I could sit and play it

Optional 2nd verse: Light and easy, play it bright and breezy,
 And this super-special song will make you smile like the "Mona Leezy."
 It's all right, it never can be wrong,
 Because it's such a super-special sorta song!

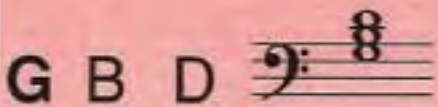
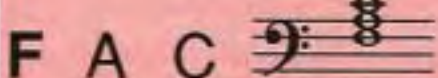
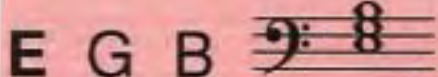
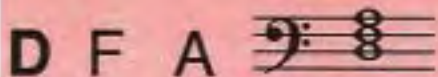
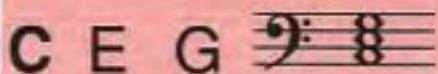
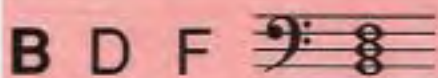
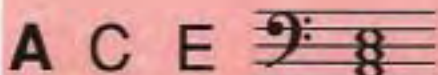
And the beat is so neat, *etc.*

THE COMPLETE "TRIAD VOCABULARY"

Play each of the following triads with LH 5 3 1, saying the names of the notes as you play, beginning with the lowest note of each triad.

Say:

Play:



With this "VOCABULARY" you can play TRIADS IN ANY KEY, simply by using the KEY SIGNATURE.

Memorize the complete "TRIAD VOCABULARY."

Cockles and Mussels

Before you play this piece, say the names of the notes of each LH triad aloud. Begin with the LOWEST note of each triad.

Andante

In Dub - lin's fair cit - y where

mf

1

1 3 5

1 3 5

1 3 5

1 3 5

1 3 5

2 4 1

TRIAD

THE TRIAD "VOCABULARY" OF THIS PIECE:

C E G D F A E G B F A C G B D

IMPORTANT: Root position triads skip a letter between each note.



Stroll in the Park

Andante moderato
(Light and airy)

Play eighth notes evenly.

In *STROLL IN THE PARK*, the RH plays **BROKEN CHORDS** while the LH plays **BLOCK CHORDS**. In the first 6 1/2 measures, the RH and LH chords are in exactly the same positions!

Willard A. Palmer

Handwritten musical score for "Stroll in the Park" in G major (one sharp) and 4/4 time. The score is divided into three systems, each with a treble and bass clef staff. Fingerings are indicated by numbers 1-5 above or below notes. Dynamics include *p* (piano) and a red circled *f* (forte) at the end of the third system.

System 1: Treble clef starts with notes G4 (finger 5), A4 (finger 3), B4 (finger 1), C5, D5, E5, F5, G5. Bass clef has block chords: G2-B2-D3 (finger 1) and G2-B2-D3 (finger 1).

System 2: Treble clef continues with notes A4 (finger 5), B4 (finger 3), C5, D5, E5, F5, G5. Bass clef has block chords: G2-B2-D3 (finger 1), G2-B2-D3 (finger 1), and G2-B2-D3 (finger 1).

System 3: Treble clef continues with notes A4 (finger 3), B4 (finger 2), C5, D5, E5, F5, G5. Bass clef has block chords: G2-B2-D3 (finger 1), G2-B2-D3 (finger 2), and G2-B2-D3 (finger 1).