

A L F R E D ' S  
B A S I C A D U L T  
T H E O R Y  
P I A N O B O O K  
LEVEL ONE

WILLARD A. PALMER

MORTON MANUS

AMANDA VICK LETHCO

**INSTRUCTIONS for USE**

1. This book may be assigned at the **FIRST LESSON**, when the student reaches page 7 of Lesson Book 1 of Alfred's Basic Adult Piano Course. Assignments should be made according to the instructions in the upper right hand corner of each page of the **THEORY BOOK**, which is coordinated with the **LESSON BOOK** page by page.
2. Every concept and principle introduced in the Lesson Book is reinforced in this book. Additional drills in note recognition make it a valuable aid in developing reading skills. Important tips are presented that make learning chord progressions easier. Reviews are presented in the form of games and puzzles.
3. Theory lessons should be completed by the student **AT HOME**, and checked by the teacher at the next lesson.

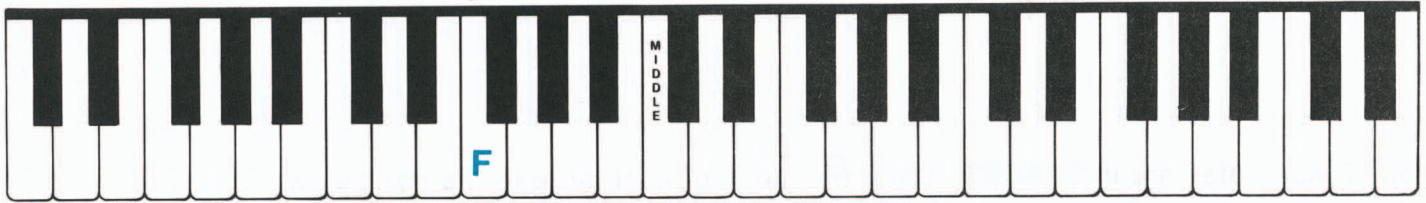
# The Bass Clef Sign

Assign with page 10.



locates the **F** below the middle of the keyboard.

This sign came from the letter **F**:



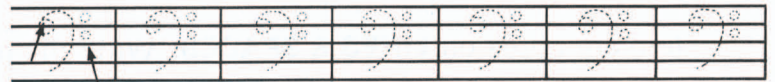
The **BASS STAFF** has 5 lines and 4 spaces.

This is the **F** line.



The **F** line passes between the two dots of the **F** clef sign.

- Trace these bass clef signs:  
Always begin on the **F** line.  
The 2 dots are in the **TOP 2 SPACES**.



Start here. Make the 2 dots last.

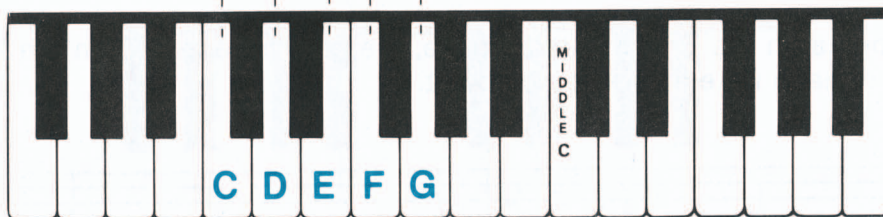
- Draw a line of bass clef signs.



The notes of the **LEFT HAND C POSITION** are written on the **BASS STAFF**.

The **C**, played by 5, is written on the 2nd space of the staff.

Each next higher note is written on the next higher line or space.

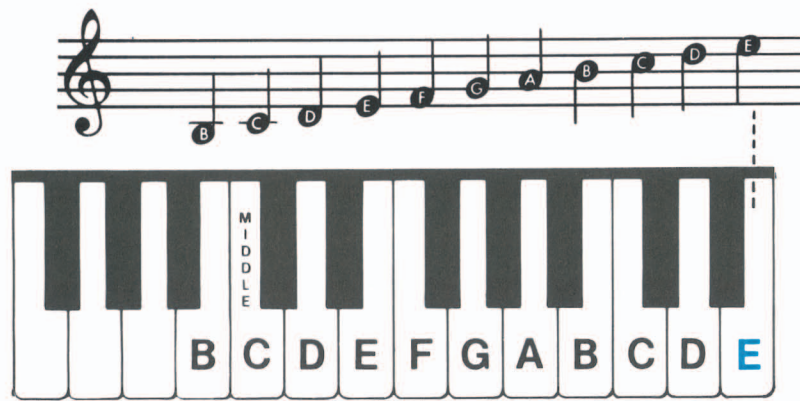


- Write the name of each note in the box below it.



# Introducing **E** for Right Hand

Assign with page 40.



This reviews all RH notes studied so far!

1. Write the name of each note in the boxes below.

2. These notes are in **SPACES**. Write the names in the boxes below.

3. These notes are on **LINES**. Write the names in the boxes.

4. These notes are on **LINES & SPACES**. Write the names in the boxes.

5. The notes in each PAIR of measures spell a word. Write the names in the boxes.

# The Primary Chords in D Minor

Assign with page 88.

**KEY OF D MINOR**  
Key Signature: 1 flat (B $\flat$ )

7 2 3 4 5 6 7 8

i D MINOR (Dm)      iv G MINOR (Gm)      V7 A7

These positions are used for smooth progressions:

1 3 5      1 2 5      1 2 5

i Dm      iv Gm      V7 A7

5 3 1      5 3 1      5 4 1

i Dm      iv Gm      V7 A7

1. Play the above progressions several times.

## How to Play i-iv & i-V7 Progressions Beginning on Any Minor Triad

**MOVING FROM i to iv**

SAME NOTE    UP 1 step    UP 1/2 step

The **LOWEST** note is the **COMMON TONE!**

Dm    Gm

i    iv

**MOVING FROM i to V7**

DOWN 1/2 step    UP 1 step    SAME NOTE

The **HIGHEST** note is the **COMMON TONE!**

Dm    A7

i    V7

- Play the above i - iv progression, 1st with LH, using 5 3 1 - 5 2 1. Repeat with RH one octave higher, using 1 3 5 - 1 3 5. Repeat.
- Play the above i - V7 progression, 1st with LH, using 5 3 1 - 5 2 1. Repeat with RH one octave higher, using 1 3 5 - 1 4 5. Repeat.
- Complete the following progressions, using the method shown above.
- Play several times.

5 3 1    5 3 1    5 3 1    5 4 1    5 3 1

i    iv    i    V7    i

1 3 5    1 2 5    1 3 5    1 2 5    1 3 5

i    iv    i    V7    i